

DOCTOR



Analysis Software

FEATURES

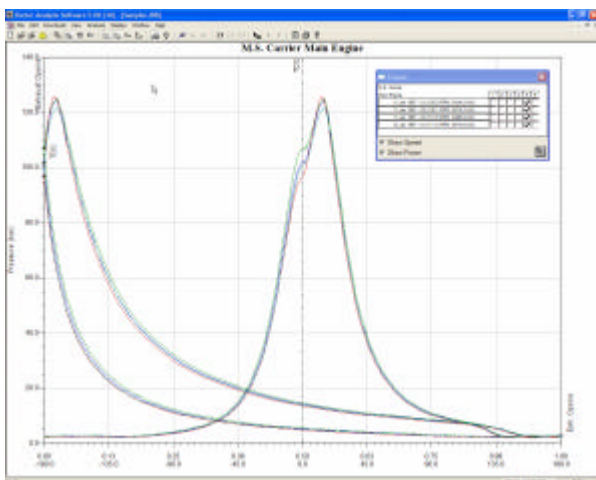
Fully Featured 32 bit Cylinder and Fuel Pressure Analysis Program
Fleet Analysis Capabilities
Compatible with Windows™ XP SP2
Built-in Emailing Tool for Sending Results
Traces, Bargraphs and Tabular Outputs Available

Doctor Analysis Software

For over 12 years, the Doctor has been helping engineers to manage their engines' condition and maintenance. The latest version uses the power of 32 bit operation, Windows™ Access database, full network capabilities and XP compliance to give every advantage to users.

The software comes on a self loading CD and includes a step by step manual, a tutorial, and many useful technical notes. The programme is intuitive and powerful at the same time and now includes many possibilities to aid fleet operators in managing groups of vessels with similar engines.

The program can be installed on as many PC's as needed, and is fully network compliant. Data can easily be sent from ship to shore using the built in Emailing tool and any modifications can be sent back the same way.



The look and feel of the Doctor has been maintained, with many enhancements to operation and data handling now added.

New Features

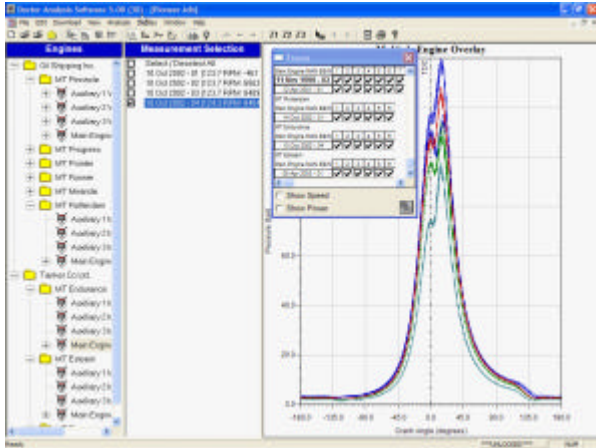
- Fleet analysis capabilities
- Drag and drop of results
- Recalc to correct errors
- Built in Email tool
- Full network compliance
- Large database capability
- Fast operation
- Notebook for each level in database
- Open up archives with double click
- Raw data export facility
- Updates earlier Doctor databases

Operation

The programme is intuitive to use, and will automatically start up with a samples database that will let you try out the features of the software. Starting your own database is done via a straightforward form for engine configuration, and then you are ready to download your first set of results.

Comparing Results

A new screen is now added that allows the user to select results from several engines at once. This powerful tool allows comparison of engines on the same ship, on different ships and even between different operators. It is the ideal tool for Fleet Analysis of engines.



Data Exchange

Within the PC, results may be moved around by clicking and dragging them to different locations in the database. If several databases are open at the same time, the window may be tiled and data may be copied from one database to another by dragging.

For the on-line system, results may now be exported from the on-line software into the Doctor software for full analysis and onward transmission

DOCTOR SOFTWARE FEATURES

Compatibility

- Supports portable, installed and on-line Doctor systems
- Converts earlier database formats

Engine Configurations

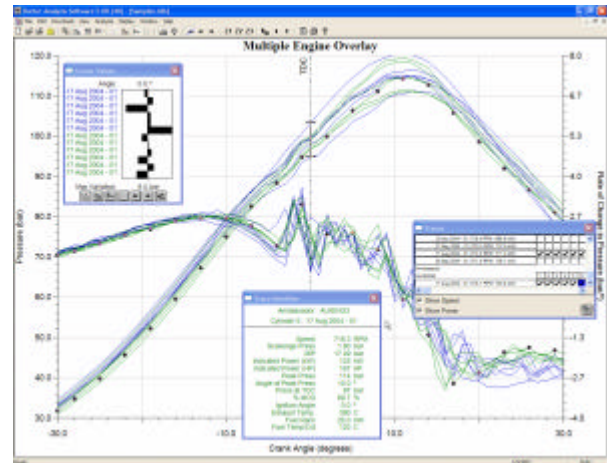
- Supports all engine types (2-stroke, 4-stroke, V or in-line, diesel, dual fuel or gas engines)
- Simple single screen to configure
- Unlimited configurations can be entered and stored

Displays

- Trace, bar graph or table of results
- Pressure-Angle, Pressure Volume, Derivative, Fuel Pressure or Vibration traces combination
- Overlay of any test with any other combination of tests for any engine.
- Overlay of similar engine tests from the same or from different ships

Sending regular results by Email now uses the address book within the PC on which the Doctor is installed and automatically generates an Email when an archive of results is made. The recipient of an archive file can open it up by merely double clicking on the file when it is received – as long as he has the Doctor installed on his PC.

Analysis and Comparisons



Point and click operation keeps viewing of tests simple. Here two similar engines are being viewed and the cursor and ID functions have been used to show up the differences between the engines. The screen has been zoomed using click and drag to show the points of interest in more detail.

- Zoom with Favourite Zoom stores
- Flexible cursor options
- ID facility identifies specific traces
- MIP, Power and many other results calculated automatically
- Ability to re-calculate results
- Notes can be tagged to test, engine or ship

Data Exchange

- Copy or move results, engines, ships etc. between databases
- Fully network compliant
- Simple archive and Email facility
- Archives open up with double click
- Export of Tables or full data sets

PC requirements

- Any standard PC running Windows XP SP2. 2000 supported with minor limitations.
- Security
- Password facilities

North American Distributer: